

NEW VERSION

The ultimate mapping solution for GARMIN GPS receivers

Terrain dictates movement.

The Central Highlands, Southwestern Plateau, or the Northern Plains, we have your AOR covered.

Features

- Full border to border topographic coverage
- Geographic points of interest including wadi, summits, kariz and settlements
- Land cover
- Hydrographic features
- Elevation profile so you can estimate terrain difficulty and display 3-D terrain shading on computer or compatible GPS devices
- Enhanced situational awareness
- compatible with any GARMIN mapping GPS receiver that will display topographic maps

Field tested by members of:

- Army National Guard
- Federal Bureau of Investigation
- Royal Canadian Dragoons
- United States Air Force
- United States Army
- United States Marine Corps

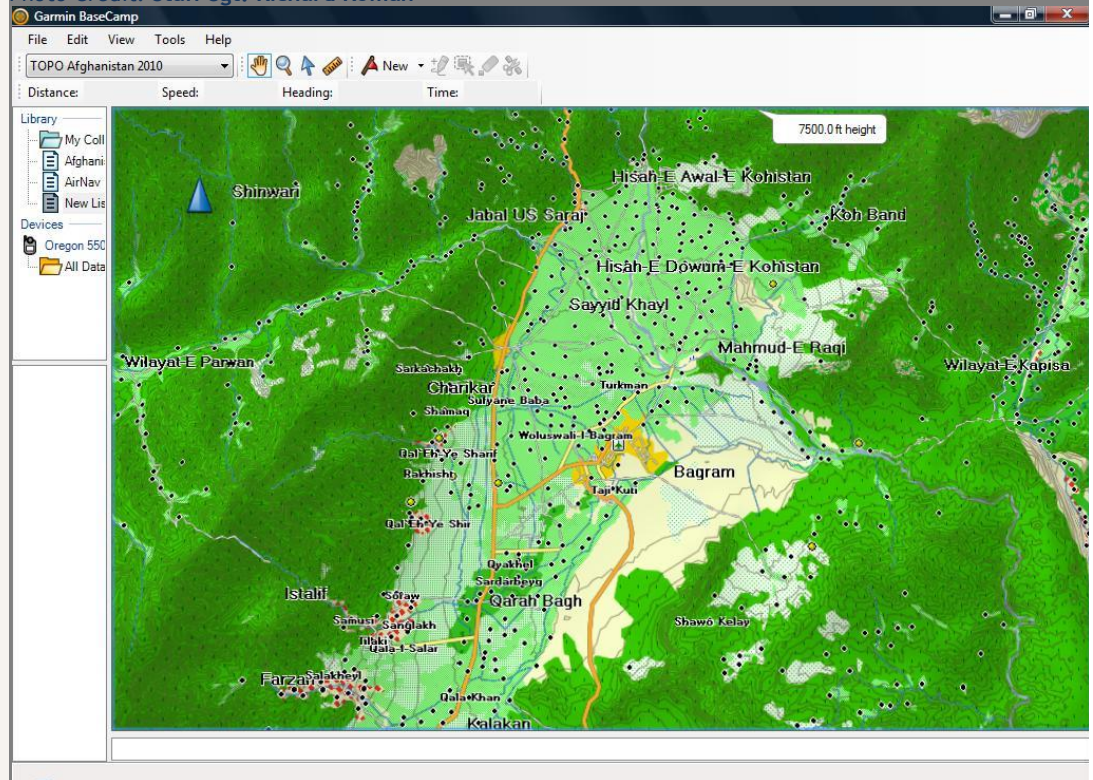
TOPO Afghanistan 2012



U.S. Air Force photo by Staff Sgt. Samuel Morse



Photo Credit: Staff Sgt. Richard Roman



MAPSOURCE

Included with our DVD map data package is Garmin's MapSource software.

ROADTRIP

RoadTrip helps you plan trips by letting you transfer map sets, waypoints, routes and tracks from your Macintosh computer to your device.

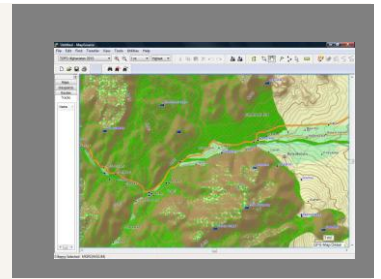
http://www8.garmin.com/support/download_details.jsp?id=4332

MAPINSTALL

MapInstall helps you install maps on your device.

Windows: http://www8.garmin.com/support/download_details.jsp?id=3291

Macintosh: <http://www8.garmin.com/support/collection.jsp?product=999-99999-06>



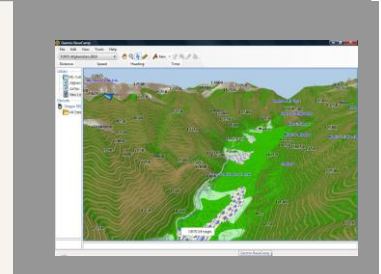
BaseCamp™

Survey the terrain, plan your route and geotag photos on your computer and then load the data to your outdoor device with BaseCamp. All with a 3D perspective.

Windows: http://www8.garmin.com/support/download_details.jsp?id=4435

Intel Macintosh: http://www8.garmin.com/support/download_details.jsp?id=4450

PPC Macintosh: http://www8.garmin.com/support/download_details.jsp?id=4940

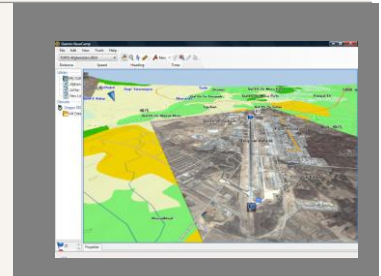


BirdsEye™ Satellite Imagery

BirdsEye™ Satellite Imagery is an optional subscription service offered by Garmin that will allow satellite imagery to be used in conjunction with our map product.

Compatible products for this optional service are:

[Colorado® 300](#) [Colorado® 400c](#) [Colorado® 400i](#) [Colorado® 400t](#)
[Dakota™ 10](#) [Dakota™ 20](#) [Oregon® 200](#) [Oregon® 300](#)
[Oregon® 400c](#) [Oregon® 400i](#) [Oregon® 400t](#) [Oregon® 450](#)
[Oregon® 450t](#) [Oregon® 550](#) [Oregon® 550t](#) [GPSMAP® 62](#)
[GPSMAP® 62s](#) [GPSMAP® 62st](#) [GPSMAP® 78](#) [GPSMAP® 78s](#)
[Astro® 320](#) [Rino® 610](#) [Rino® 650](#) [Rino® 655t](#)
[Edge® 800](#) [eTrex® 20](#) [eTrex® 30](#) [Montana™ 600](#)
[Montana™ 650](#) [Montana™ 650t](#) [GPSMAP® 62sc](#) [GPSMAP® 62stc](#)



Minimum Requirements

PC

- Windows® XP SP3 or newer
- 1 GB RAM
- at least 1024 x 768 display
- USB port
- Internet access
- DVD drive

Mac®

- Any Intel-based or PowerPC G4 or later Mac OS
- OS X 10.5.8 or later
- 1 GB RAM
- at least 1024 x 768 display
- USB port
- Internet access
- DVD drive

Contains Technology licensed by GARMIN

This product is available to authorized government distributors and end users and only.

TOPO Afghanistan

DVD version

Manufacturer part number: TAF2012D

TOPO Afghanistan

microSD datacard version

Manufacturer part number: TAF2012M

North Hollywood Cartography, LLC 5161 N. Cartwright Ave., Suite A, North Hollywood, CA 91601-4075 USA

Direct 661 492 9290, Fax 818 985 7020, E-mail info@nohgis.com

© 2010-2012 North Hollywood Cartography, LLC. All rights reserved.

CAGE CODE: 69QY2